

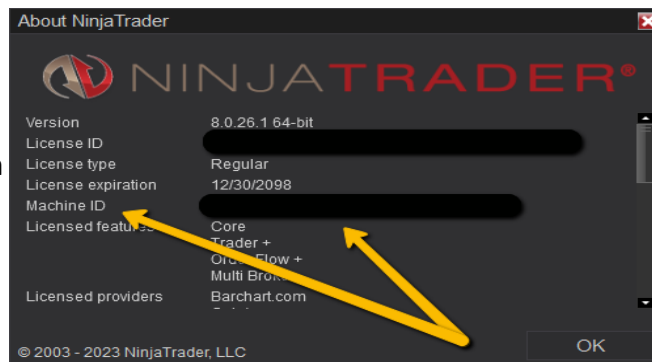
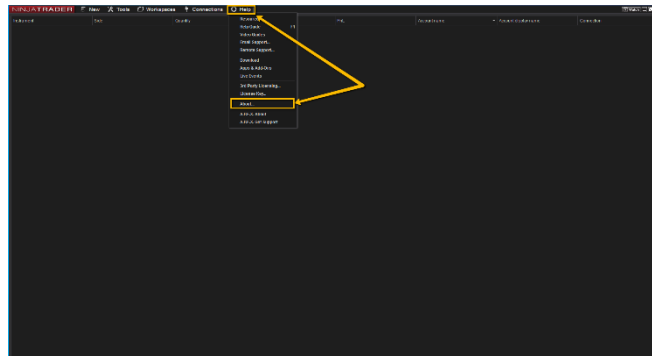


# Tick Management Tool

FuturesSniperBeast.com

**\*Important, You Must Submit Your Machine ID For Access To This Tool.**

1. Go to Help
2. Click About
3. Copy the machine ID
4. Reply to your order confirmation email e-mail with your machine ID or send an e-mail directly to support@futuressniperbeast.com



## How to install the tool

You will need the zip file that you downloaded. Follow the instructions on this video for installing:

[Install a 3<sup>rd</sup> Party Indicator or App](#)

1. Tools
  2. Import
  3. Ninja Script ADD-ON
  4. Select Indicator Zip File
  5. Click Open
  6. Wait for the notification saying NinjaTrader successfully imported all scripts
-



# Tick Management Tool

FuturesSniperBeast.com

## Indicator configuration & Setup

Follow the instructions on this video for configuring & setup:

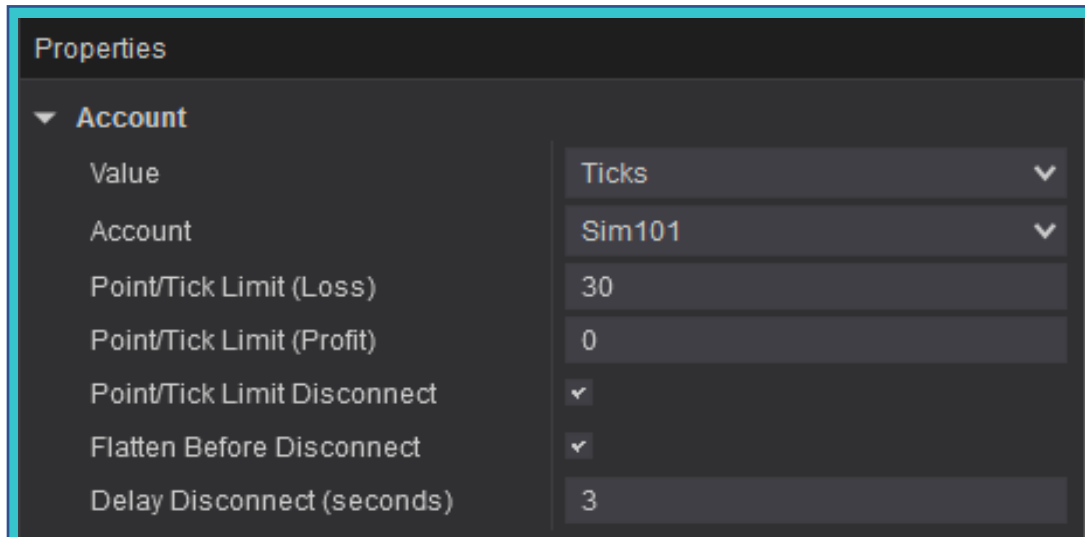
 [How to Configure & Setup](#)

1. Open a chart
2. Go to indicators by pressing CTRL + I or right click the chart
3. Scroll down the indicators list and select "TickPNL" and double click to add

Select account, value in form of ticks or points, tick loss limit, tick profit limit (if desired), check the Tick limit disconnect box if you would like it to disconnect you from data once these limits have been reached to prevent further trading.

**\*HIGHLY RECOMMENDED\*** Select Flatten Before Disconnect. This will ensure **ALL positions** are flattened across ALL accounts before the tool will disconnect data. This is a huge safety feature for you!

Select if you want a delay in seconds before the disconnect. I recommend at least 2-3 seconds that way you can ensure all orders have in fact been closed out.



The screenshot shows the 'Properties' dialog box for the Tick Management Tool. It is a dark-themed window with a light blue border. The 'Account' section is expanded, showing several configuration options:

Property	Value
Value	Ticks
Account	Sim101
Point/Tick Limit (Loss)	30
Point/Tick Limit (Profit)	0
Point/Tick Limit Disconnect	<input checked="" type="checkbox"/>
Flatten Before Disconnect	<input checked="" type="checkbox"/>
Delay Disconnect (seconds)	3



# Tick Management Tool

[FuturesSniperBeast.com](http://FuturesSniperBeast.com)

You can also change some settings to display such as font, outline color, box area color, and box opacity color.

